

1st Generation

1. **Charlemagne the Great Emperor The West (#657)** was born on Apr. 2, 742 in Ingelheim, Aachen, Nordrhein-Westfalen, Germany and died on Jan. 28, 814 in Aix La Chapelle, Aachen, Rheinland-Pfalz, Germany. He married **Hildegarde Swabia (#405)**. **Hildegarde** was born in Aachen, Rheinland-Pfalz, Germany and died in Thionville, Moselle, Lorraine, France.



Children of **Charlemagne the Great Emperor The West (#657)** and **Hildegarde Swabia (#405)**

- i. 2. **Pepin Carloman (#504)** was born in Aachen, Rheinland-Pfalz, Germany and died in Milan, Milano, Lombardia, Italy.

2nd Generation (Children)

2. **Pepin Carloman (#504)** was born in Aachen, Rheinland-Pfalz, Germany and died in Milan, Milano, Lombardia, Italy. He married **Bertha Italy DEToulouse DEGellone (#231)**. **Bertha Italy** was born in Toulouse, Haute-Garonne, Midi-Pyrenees, France and died in Milan, Milano, Lombardia, Italy.



Children of **Pepin Carloman (#504)** and **Bertha Italy DEToulouse DEGellone (#231)**

- i. 3. **Bernard Italy (#466)** was born in 797 in Vermandois, Normandy, France and died on Apr. 17, 818 in Milan, Milano, Lombardia, Italy.

3rd Generation (Grandchildren)

3. **Bernard Italy (#466)** was born in 797 in Vermandois, Normandy, France and died on Apr. 17, 818 in Milan, Milano, Lombardia, Italy. He married **Kunigunda Cunegonde (#357)**. **Kunigunda** was born in Bohain En, Aisne, Picardie, France and died in Milan, Milano, Lombardia, Italy.



Children of **Bernard Italy (#466)** and **Kunigunda Cunegonde (#357)**

- i. 4. **Pepin Quentin (#45)** was born in 817 in Vermandois, Normandy, France and died in 840 in Milan, Milano, Lombardia, Italy.

4th Generation (Great-grandchildren)

4. **Pepin Quentin (#45)** was born in 817 in Vermandois, Normandy, France and died in 840 in Milan, Milano, Lombardia, Italy. He married **Rothaide DeBobbio (#77)**. **Rothaide** was born in Vermandois, Picardie, France and died in Italy.



Children of **Pepin Quentin (#45)** and **Rothaide DeBobbio (#77)**

- i. 5. **Pepin I DeSenlis (#181)** was born in 846 in Vermandois, Normandy, France and died in 893 in Northeastern, France.

5th Generation (Great(2)-grandchildren)

5. **Pepin I DeSenlis (#181)** was born in 846 in Vermandois, Normandy, France and died in 893 in Northeastern, France. He married **Pepin (#236)**. **Pepin** was born in France and died DEC in Milan, Milano, Lombardia, Italy.



Children of **Pepin I DeSenlis (#181)** and **Pepin (#236)**

- i. 6. **Mrs Bberenger DeBayeux (#121)** was born in 852 in Bayeux, Calvados, Basse-Normandie, France and died in Bayeaux, France.

6th Generation (Great(3)-grandchildren)

6. **Mrs Bberenger DeBayeux (#121)** was born in 852 in Bayeux, Calvados, Basse-Normandie, France and died in Bayeaux, France. She married **Berenger Guy Senlis DeBayeaux (#545)**. **Berenger Guy Senlis** was born in Bayeux, Calvados, Basse-Normandie, France and died in Viking Bayeaux, Normandy, France.



Children of **Mrs Bberenger DeBayeux (#121)** and **Berenger Guy Senlis DeBayeaux (#545)**

- i. 7. **Poppa Puppet Little Doll Duchess of DeValois (#382)** was born in Bayeux, Calvados, Basse-Normandie, France and died in Rouen, Seine-Maritime, Haute-Normandie, France.

7th Generation (Great(4)-grandchildren)

7. **Poppa Puppet Little Doll Duchess of DeValois (#382)** was born in Bayeux, Calvados, Basse-Normandie, France and died in Rouen, Seine-Maritime, Haute-Normandie, France. She married **Robert Rollo Normandy Ragnvaldsson (#49)**. **Robert Rollo Normandy**, son of **Ragnhild Countess More Hrolfsdatter (#30)**, was born in 846 in Maer, Nord, Norway and died in 931 in Rouen, Seine-Maritime, Haute-Normandie, France.



Children of **Poppa Puppet Little Doll Duchess of DeValois (#382)** and **Robert Rollo Normandy Ragnvaldsson (#49)**

- i. 8. **William of Normandy Longsword (#412)** was born in 942 in Rouen, Seine-Maritime, Haute-Normandie, France and died on Dec. 17, 942 in Neustrie, Normandy, France.

8th Generation (Great(5)-grandchildren)

8. **William of Normandy Longsword (#412)** was born in 942 in Rouen, Seine-Maritime, Haute-Normandie, France and died on Dec. 17, 942 in Neustrie, Normandy, France. He married **Sprote De Bretagne (#35)**. **Sprote** was born in 911 in Senlis, Oise, Picardie, France and died in 940 in Neustrie, Normandy, France.



Children of **William of Normandy Longsword (#412)** and **Sprote De Bretagne (#35)**

- i. 9. **"The Fearless" (Duke of Normandy) Richard I (#317)** was born on Aug. 28, 933 in Fécamp, Seine-Maritime, Haute-Normandie, France and died on Nov. 20, 996 in Fécamp, Seine-Maritime, Haute-Normandie, France.

9th Generation (Great(6)-grandchildren)

9. **"The Fearless" (Duke of Normandy) Richard I (#317)** was born on Aug. 28, 933 in Fécamp, Seine-Maritime, Haute-Normandie, France and died on Nov. 20, 996 in Fécamp, Seine-Maritime, Haute-Normandie, France. He married **Gunnora De CREPON (#392)**. **Gunnora De** was born on Nov. 21, 936 in Crepon, Normandy, France and died in 1031 in Neustrie, Normandy, France.



Children of **"The Fearless" (Duke of Normandy) Richard I (#317)** and **Gunnora De CREPON (#392)**

- i. 10. **Richard II The Good of Normandy (#366)** was born on Aug. 23, 958 in Rouen, Seine Inferieure, Normandy, France and died on Aug. 28, 1026 in Fécamp, Seine-Maritime, Haute-Normandie, France.

10th Generation (Great(7)-grandchildren)

10. **Richard II The Good of Normandy (#366)** was born on Aug. 23, 958 in Rouen, Seine Inferieure, Normandy, France and died on Aug. 28, 1026 in Fécamp, Seine-Maritime, Haute-Normandie, France. He married **Judith of Brittany (#514)**. **Judith of** was born in Rennes, Ille-et-Vilaine, Bretagne, France and died on Jun. 16, 1017 in Normandy, France.



Children of **Richard II The Good of Normandy (#366)** and **Judith of Brittany (#514)**

- i. 11. **Robert L "the Magnificent" Duke Of Normandy (#587)** was born in 999 in Normandy, France and died on Jul. 22, 1035 in Nicea, Bithynia, Turkey.

11th Generation (Great(8)-grandchildren)

11. **Robert L "the Magnificent" Duke Of Normandy (#587)** was born in 999 in Normandy, France and died on Jul. 22, 1035 in Nicea, Bithynia, Turkey. He married **Harlette De Falaise (#332)**. **Harlette**, daughter of **Fulbert Chamberlain DeFalaise (#25)** and **Doda Duxia DeFalaise (#18)**, was born in 1003 in Falaise, Clavados, France and died in 1050 in Mortain, Normandy, France.



Children of **Robert L "the Magnificent" Duke Of Normandy (#587)** and **Harlette De Falaise (#332)**

- i. 12. **William I Conqueror (#84)** was born on Oct. 14, 1024 in Falaise, Normandy, France and died on Sep. 9, 1087 in Rouen, Seine-Maritime, Haute-Normandie, France.

12th Generation (Great(9)-grandchildren)

12. **William I Conqueror (#84)** was born on Oct. 14, 1024 in Falaise, Normandy, France and died on Sep. 9, 1087 in Rouen, Seine-Maritime, Haute-Normandie, France. He married **Matilda Of Flanders (#597)**. **Matilda**, daughter of **Baldwin V the Pious de Forester (#143)** and **Mathilda vonBillung (#336)**, was born in 1031 in Flanders, France and died on Nov. 2, 1083 in Caen, Calvados, Basse-Normandie, France.



Children of **William I Conqueror (#84)** and **Matilda Of Flanders (#597)**

- i. 13. **King Henry I Beauclerc Of England (#296)** was born in 1068 in Selby, Yorkshire, England and died on Dec. 1, 1135 in St Denis, Cher, Centre, France.

13th Generation (Great(10)-grandchildren)

13. **King Henry I Beauclerc Of England (#296)** was born in 1068 in Selby, Yorkshire, England and died on Dec. 1, 1135 in St Denis, Cher, Centre, France. He married **Princess Matilda Of Scotland (#291)**. **Princess Matilda**, daughter of **Malcolm III Ceanmor Longneck I Of SCOTLAND (#124)** and **Margaret Of Scotland (#81)**, was born in 1070 in Dunfermline, Fife, Scotland and died on May 1, 1118 in London, Middlesex, England.



Children of **King Henry I Beauclerc Of England (#296)** and **Princess Matilda Of Scotland (#291)**

- i. 14. **Matilda Maud Empress Of Germany Princess of ENGLAND (#404)** was born on Feb. 7, 1102 in Winchester, London, Middlesex, England or Royal palace at Sutton Courtenay in Berkshire now Oxfordshire and died on Sep. 10, 1169 in Notre Dame, Rouen, Seine-Maritime, France.

14th Generation (Great(11)-grandchildren)

14. **Matilda Maud Empress Of Germany Princess of ENGLAND (#404)** was born on Feb. 7, 1102 in Winchester, London, Middlesex, England or Royal palace at Sutton Courtenay in Berkshire now Oxfordshire and died on Sep. 10, 1169 in Notre Dame, Rouen, Seine-Maritime, France. She married **Geoffrey V The Fair Count of Anjou PLANTAGENET (#358)**. **Geoffrey V The Fair Count of Anjou**, son of **Fulk V, The Younger, Count of Anjou, of Jerusalem (#437)** and **Ermengarde or Erembourg, Countess of Anjou, DuMaine or Du Maine or deMaine or de Maine or Maine or Main (#87)**, was born on Aug. 24, 1113 in Anjou, France and died on Sep. 7, 1151 in Chateau, France.



Children of **Matilda Maud Empress Of Germany Princess of ENGLAND (#404)** and **Geoffrey V The Fair Count of Anjou PLANTAGENET (#358)**

- i. 15. **Henry II Plantagenet King of England (#174)** was born on Mar. 25, 1133 in Le Mans, Sarthe, Pays de la Loire, France and died on Jul. 6, 1189 in Chinon, Indre-et-Loire, Centre, France.

15th Generation (Great(12)-grandchildren)

15. **Henry II Plantagenet King of England (#174)** was born on Mar. 25, 1133 in Le Mans, Sarthe, Pays de la Loire, France and died on Jul. 6, 1189 in Chinon, Indre-et-Loire, Centre, France. He married **Eleanor Of Aquitaine (#424)**. **Eleanor**, daughter of **Count William X Duc de Aquataine (#613)** and **Eleanor DeChatellerault (#180)**, was born in 1122 in Belin, Gironde, Aquitaine, France and died on Mar. 31, 1204 in Mirabell Castle, Tarn-et-Garonne, Midi-Pyrenees, France.



Children of **Henry II Plantagenet King of England (#174)** and **Eleanor Of Aquitaine (#424)**

- i. 16. **Geoffrey Plantagenet (#571)** was born in 1151 and died on Dec. 18, 1212 in Rouen, Seine-Maritime, Haute-Normandie, France.
- ii. 17. **Richard The Lion Heart Anjou II Plantagenet (#22)** was born on Sep. 8, 1157 in Beaumont, Oxfordshire, England and died on Apr. 6, 1199 in Châlus, Haute-Vienne, Limousin, France.
- iii. 18. **King John Lackland Plantagenet (#142)** was born on Dec. 24, 1166 in Oxford, England and died on Oct. 19, 1216 in Newark, Nottinghamshire, England.
- iv. 19. **Henry III England (#397)** was born on Oct. 10, 1206 in Winchester, Hampshire, England and died on Jun. 16, 1272 in Westminster, London, Eng, England.

16th Generation (Great(13)-grandchildren)

16. **Geoffrey Plantagenet (#571)** was born in 1151 and died on Dec. 18, 1212 in Rouen, Seine-Maritime, Haute-Normandie, France.



17. **Richard The Lion Heart Anjou II Plantagenet (#22)** was born on Sep. 8, 1157 in Beaumont, Oxfordshire, England and died on Apr. 6, 1199 in Châlus, Haute-Vienne, Limousin, France.



18. **King John Lackland Plantagenet (#142)** was born on Dec. 24, 1166 in Oxford, England and died on Oct. 19, 1216 in Newark, Nottinghamshire, England. He married **Isabella of Angouleme Taillefer (#215)**. **Isabella of Angouleme** was born in 1188 in Angoulême, Charente, Poitou-Charentes, France and died on May 31, 1245 in Fontevrault, Maine-et-Loire, Pays de la Loire, France.



Children of **King John Lackland Plantagenet (#142)** and **Isabella of Angouleme Taillefer (#215)**

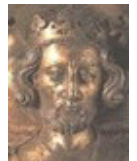
- i. 20. **Henry III 'King of England' Plantagenet (#254)** was born on Oct. 1, 1207 in Winchester Castle, Hampshire, England and died on Nov. 16, 1272 in Westminster, London, England.
- ii. 21. **Joan of England (#406)** was born on Jul. 22, 1210 in Castle, McPherson, Kansas, United States and died on Mar. 4, 1238 in Essex, England.
- iii. 22. **Isabella, Plantagenet (#368)** was born in 1214 in Gloucester, Gloucestershire, England.
- iv. 23. **Eleanor Plantagenet (#50)** was born in 1215 in Gloucestershire, England and died on Apr. 13, 1257 in Montargis Abbey, France.

19. **Henry III England (#397)** was born on Oct. 10, 1206 in Winchester, Hampshire, England and died on Jun. 16, 1272 in Westminster, London, Eng, England.



17th Generation (Great(14)-grandchildren)

20. **Henry III 'King of England' Plantagenet (#254)** was born on Oct. 1, 1207 in Winchester Castle, Hampshire, England and died on Nov. 16, 1272 in Westminster, London, England. He married **Eleanor of Provence (#26)**. **Eleanor of Provence**, daughter of **Raimond Berengar IV Count of Provence (#51)** and **(Lady) Beatrice de Savoie (Countess of Provence) (#362)**, was born in 1223 in Aix en Provence, Bouches-du-Rhone, Provence-Alpes-Cote d'Azur, France and died on Jun. 26, 1291 in Amesbury, Wiltshire, England.



Children of **Henry III 'King of England' Plantagenet (#254)** and **Eleanor of Provence (#26)**

- i. 24. **EDWARD I England Longshanks PLANTAGENET (#650)** was born on Jun. 17, 1239 in Westminster, Middlesex, England and died on Jul. 7, 1307 in Burgh On Sands, Cumberland, England.

21. **Joan of England (#406)** was born on Jul. 22, 1210 in Castle, McPherson, Kansas, United States and died on Mar. 4, 1238 in Essex, England. She married **Alexander II King of Scotland (#526)** About Jun. 18, 1221 in York Minster; York, Yorkshire, England. **Alexander II**, son of **William I The Lion King of Scots (#391)** and **Ermengarde de Beaumont (#579)**, was born on Aug. 24, 1198 in Haddington, East Lothian, Scotland and died on Jul. 6, 1249 in Isle of Kerrara, Bay of Oban, Argyll, Scotland.



22. **Isabella, Plantagenet (#368)** was born in 1214 in Gloucester, Gloucestershire, England.



23. **Eleanor Plantagenet (#50)** was born in 1215 in Gloucestershire, England and died on Apr. 13, 1257 in Montargis Abbey, France.



18th Generation (Great(15)-grandchildren)

24. **EDWARD I England Longshanks PLANTAGENET (#650)** was born on Jun. 17, 1239 in Westminster, Middlesex, England and died on Jul. 7, 1307 in Burgh On Sands, Cumberland, England. He married 1st **Marguerite Of France (#659)** on Sep. 8, 1299. **Marguerite Of**, daughter of **Philip III King of France The Bold Capet (#259)** and **Isabella Queen Consort of France Aragon (#69)**, was born in 1279 in Paris, Paris, Ile-de-France, France and died on Feb. 14, 1317 in Marlborough, Wiltshire, England. He married 2nd **Eleanor Queen Consort of Engand, Countess of Ponthieu, Princess Castile (#248)** on Nov. 1, 1254 in Castile, Leon, Castilla-Leon, Spair **Eleanor Queen Consort of Engand, Countess of Ponthieu, Princess**, daughter of **Fernando 'Ferdinand' III "The Saint" King CASTILE and LEON (#509)** and **Jeanne Queen Castilla-Leon, Countess of Poitou Dammartin (#588)**, was born on Oct. 18, 1241 in Burgos, Burgos, Castilla-Leon, Spain and died on Nov. 29, 1290 in Herdeby, Lincolnshire, England.



Children of **EDWARD I England Longshanks PLANTAGENET (#650)** and **Marguerite Of France (#659)**

- i. 25. **Edmund 'of Woodstock 1st Earl of Kent' Plantagenet (#201)** was born on Aug. 5, 1301 in Woodstock, Oxfordshire, England and died on Mar. 19, 1330 in Winchester Castle, Hampshire, England.

Children of **EDWARD I England Longshanks PLANTAGENET (#650)** and **Eleanor Queen Consort of Engand, Countess of Ponthieu, Princess Castile (#248)**

- ii. 26. **ELIZABETH "OF RHUDDLAN" PLANTAGENET (#542)** was born on Aug. 7, 1282 in Rhuddlan Castle, Flintshire, Wales and died on May 5, 1316 in Quendon, Essex, Eng, England.
- iii. 27. **Edward II King England Plantagenet (#214)** was born on Apr. 25, 1284 in Caernarvon, Caernarvonshire, Wales and died on Sep. 21, 1327 in Berkeley, Gloucestershire, England.

19th Generation (Great(16)-grandchildren)

25. **Edmund 'of Woodstock 1st Earl of Kent' Plantagenet (#201)** was born on Aug. 5, 1301 in Woodstock, Oxfordshire, England and died on Mar. 19, 1330 in Winchester Castle, Hampshire, England.



26. **ELIZABETH "OF RHUDDLAN" PLANTAGENET (#542)** was born on Aug. 7, 1282 in Rhuddlan Castle, Flintshire, Wales and died on May 5, 1316 in Quendon, Essex, Eng, England. She married **HUMPHREY VIII 4th EARL HEREFORD & ESSEX amp de BOHUN (#538)**. **HUMPHREY VIII 4th EARL HEREFORD & ESSEX amp**, son of **Humphrey VII Earl Hereford DeBohun (#314)** and **Maud Countess Hereford and Essex DeFiennes (#450)**, was born in 1276 in Pleshy Castle, Essex, England and died on Mar. 16, 1322 in Boroughbridge, Yorkshire, England.



Children of **ELIZABETH "OF RHUDDLAN" PLANTAGENET (#542)** and **HUMPHREY VIII 4th EARL HEREFORD & ESSEX amp de BOHUN (#538)**

- i. 28. **WILLIAM de Bohun 1st Earl of Northampton (#135)** was born in 1312 in Caldecot, Northamptonshire, England and died on Sep. 16, 1360 in Herefordshire, England.

27. **Edward II King England Plantagenet (#214)** was born on Apr. 25, 1284 in Caernarvon, Caernarvonshire, Wales and died on Sep. 21, 1327 in Berkeley, Gloucestershire, England. He married **Isabella de France Queen Consort of England "She Wolf" Capet (#88)**. **Isabella de France Queen Consort of England "She Wolf"**, daughter of **Philip IV King of France "The Fair" Capet (#200)** and **Jeanne I Queen of Navarre Queen Consort of France (#284)**, was born in 1292 in Paris, Ile-de-France, France and died on Aug. 22, 1358 in Hertford Castle, Hertfordshire, England.



Children of **Edward II King England Plantagenet (#214)** and **Isabella de France Queen Consort of England "She Wolf" Capet (#88)**

- i. 29. **Edward III King of England, Lord of Ireland Plantagenet (#117)** was born on Nov. 13, 1312 in Windsor, Berkshire, England and died on Jun. 21, 1377 in Richmond, Surrey, England.

20th Generation (Great(17)-grandchildren)

28. **WILLIAM de Bohun 1st Earl of Northampton (#135)** was born in 1312 in Caldecot, Northamptonshire, England and died on Sep. 16, 1360 in Herefordshire, England. He married **ELIZABETH de Badlesmere (#282)**. **ELIZABETH de** was born in 1313 in Chilham, Kent, England and died on Jun. 8, 1356 in London, Middlesex, England.



Children of **WILLIAM de Bohun 1st Earl of Northampton (#135)** and **ELIZABETH de Badlesmere (#282)**

- i. 30. **Sir Humphrey, vh Earl of Essex, Hereford and Northampton, KG, De Bohun (#237)** was born on Mar. 25, 1342 in Hereford Castle, Herefordshire, England and died on Jan. 16, 1373 in Walden Abbey, Essex, England.

29. **Edward III King of England, Lord of Ireland Plantagenet (#117)** was born on Nov. 13, 1312 in Windsor, Berkshire, England and died on Jun. 21, 1377 in Richmond, Surrey, England. He married **Philippe Countess Holland DeHainaut (#103)** on Jan. 24, 1328 in York, Yorkshire, England. **Philippe Countess Holland** was born on Jun. 24, 1311 in Le Quesnoy, Nord, Nord-Pas-de-Calais, France and died on Aug. 14, 1369 in Windsor, Berkshire, England.



Children of **Edward III King of England, Lord of Ireland Plantagenet (#117)** and **Philippe Countess Holland DeHainaut (#103)**

- i. 31. **Edward, Prince of Wales, "The Black Prince" Plantagenet (#388)** was born on Jun. 15, 1330 in Woodstock, Oxfordshire, England and died on Jun. 8, 1376 in Westminster, Berkshire, England.
- ii. 32. **Isabella Plantagenet (#228)** was born on Jun. 16, 1332 in Woodstock, Oxfordshire, England and died on May 4, 1379 in Newgate, Middlesex, England.
- iii. 33. **Joanna Plantagenet (#568)** was born in Feb. 1333 in Woodstock, Oxfordshire, England and died on Sep. 2, 1348 in Bordeaux, Gironde, Aquitaine, France.
- iv. 34. **William Plantagenet (#560)** was born on Feb. 16, 1335 in Hatfield, Hertfordshire, England and died on Jul. 8, 1337 in Hatfield, Hertfordshire, England.
- v. 35. **Lionel, 1st Duke of Clarence Plantagenet (#312)** was born on Nov. 29, 1338 in Antwerpen, Antwerpen, Belgium and died on Oct. 17, 1368 in Alba, Cuneo, Piemonte, Italy.
- vi. 36. **John of Gaunt, Duke of Lancaster Plantagenet (#260)** was born on Mar. 14, 1340 in Abbaye De St Bavon, Ghent, Flandre Orientale, Belgium and died on Feb. 3, 1399 in Leicester, Leicestershire, England.
- vii. 37. **Edmund of Langley, 1st Duke of York Plantagenet (#607)** was born on Jun. 5, 1341 in Kings Langley, Hertfordshire, England and died on Aug. 1, 1402 in Kings Langley, Hertfordshire, England.
- viii. 38. **Blanche Plantagenet (#442)** was born in Mar. 1342 in London, Middlesex, England and died in Mar. 1342 in London, Middlesex, Connecticut, United States.
- ix. 39. **Margaret Plantagenet (#556)** was born on Jul. 10, 1346 in Windsor, Berkshire, England and died on Oct. 1, 1361 in Spain.
- x. 40. **Thomas Plantagenet (#318)** was born in 1347 in Windsor, Berkshire, England and died in 1348 in Windsor, Berkshire, England.
- xi. 41. **Prince Thomas of Woodstock, Duke Gloucester, Earl Buckingham, Plantagenet (#436)** was born on Jan. 7, 1355 in Woodstock, Oxfordshire, England and died on Sep. 8, 1397 in Calais, Pas-de-Calais, Nord-Pas-de-Calais, France.

21st Generation (Great(18)-grandchildren)

30. **Sir Humphrey, vh Earl of Essex, Hereford and Northampton, KG, De Bohun (#237)** was born on Mar. 25, 1342 in Hereford Castle, Herefordshire, England and died on Jan. 16, 1373 in Walden Abbey, Essex, England. He married **Joan 'Countess of Hereford' Fitzalan (#116)**. **Joan 'Countess of Hereford'** was born in 1347 in Arundel, Essex, England and died on Apr. 7, 1419 in Saffran Walden, Essex, England.



Children of **Sir Humphrey, vh Earl of Essex, Hereford and Northampton, KG, De Bohun (#237)** and **Joan 'Countess of Hereford' Fitzalan (#116)**

i. 42. **Eleanor, Duchess of Gloucester, de Bohun (#665)** was born on Jun. 6, 1366 in Hereford, Herefordshire, England and died on Oct. 3, 1399 in Aldgate, Middlesex, London, England or Barking Church, Essex (buried at Westminster Abbey).

31. **Edward, Prince of Wales, "The Black Prince" Plantagenet (#388)** was born on Jun. 15, 1330 in Woodstock, Oxfordshire, England and died on Jun. 8, 1376 in Westminster, Berkshire, England.



32. **Isabella Plantagenet (#228)** was born on Jun. 16, 1332 in Woodstock, Oxfordshire, England and died on May 4, 1379 in Newgate, Middlesex, England.



33. **Joanna Plantagenet (#568)** was born in Feb. 1333 in Woodstock, Oxfordshire, England and died on Sep. 2, 1348 in Bordeaux, Gironde, Aquitaine, France.



34. **William Plantagenet (#560)** was born on Feb. 16, 1335 in Hatfield, Hertfordshire, England and died on Jul. 8, 1337 in Hatfield, Hertfordshire, England.



35. **Lionel, 1st Duke of Clarence Plantagenet (#312)** was born on Nov. 29, 1338 in Antwerpen, Antwerpen, Belgium and died on Oct. 17, 1368 in Alba, Cuneo, Piemonte, Italy.



36. **John of Gaunt, Duke of Lancaster Plantagenet (#260)** was born on Mar. 14, 1340 in Abbaye De St Bavon, Ghent, Flandre Orientale, Belgium and died on Feb. 3, 1399 in Leicester, Leicestershire, England.



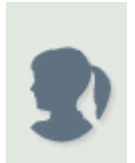
Children of **John of Gaunt, Duke of Lancaster Plantagenet (#260)**

i. 43. **Katherine Lancaster Plantagenet (#687)** was born on Jun. 6, 1372 in Hertford, Hertfordshire, England and died on Jun. 2, 1418 in Valladolid, Valladolid, Castilla-Leon, Spain.

37. **Edmund of Langley, 1st Duke of York Plantagenet (#607)** was born on Jun. 5, 1341 in Kings Langley, Hertfordshire, England and died on Aug. 1, 1402 in Kings Langley, Hertfordshire, England.



38. **Blanche Plantagenet (#442)** was born in Mar. 1342 in London, Middlesex, England and died in Mar. 1342 in London, Middlesex, Connecticut, United States.



39. **Margaret Plantagenet (#556)** was born on Jul. 10, 1346 in Windsor, Berkshire, England and died on Oct. 1, 1361 in Spain.



40. **Thomas Plantagenet (#318)** was born in 1347 in Windsor, Berkshire, England and died in 1348 in Windsor, Berkshire, England.



41. **Prince Thomas of Woodstock, Duke Gloucester, Earl Buckingham, Plantagenet (#436)** was born on Jan. 7, 1355 in Woodstock, Oxfordshire, England and died on Sep. 8, 1397 in Calais, Pas-de-Calais, Nord-Pas-de-Calais, France. He married **Eleanor, Duchess of Gloucester, de Bohun (#665)**. **Eleanor, Duchess of Gloucester**, daughter of **Sir Humphrey, 1st Earl of Essex, Hereford and Northampton, KG, De Bohun (#237)** and **Joan 'Countess of Hereford' Fitzalan (#116)**, was born on Jun. 6, 1366 in Hereford, Herefordshire, England and died on Oct. 3, 1399 in Aldgate, Middlesex, London, England or Barking Church, Essex (buried at Westminster Abbey).

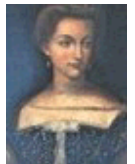


Children of **Prince Thomas of Woodstock, Duke Gloucester, Earl Buckingham, Plantagenet (#436)** and **Eleanor, Duchess of Gloucester, de Bohun (#665)**

- i. 44. **Anne of Woodstock, Countess of Buckingham, Plantagenet (#351)** was born in Apr. 1383 in Pheshy, Essex, England and died on Oct. 16, 1438 in Llanthony, Gloucestershire, England.

22nd Generation (Great(19)-grandchildren)

42. **Eleanor, Duchess of Gloucester, de Bohun (#665)** was born on Jun. 6, 1366 in Hereford, Herefordshire, England and died on Oct. 3, 1399 in Aldgate, Middlesex, London, England or Barking Church, Essex (buried at Westminster Abbey). She married **Prince Thomas of Woodstock, Duke Gloucester, Earl Buckingham, Plantagenet (#436)**. **Prince Thomas of Woodstock, Duke Gloucester, Earl Buckingham**, son of **Edward III King of England, Lord of Ireland Plantagenet (#117)** and **Philippe Countess Holland DeHainaut (#103)**, was born on Jan. 7, 1355 in Woodstock, Oxfordshire, England and died on Sep. 8, 1397 in Calais, Pas-de-Calais, Nord-Pas-de-Calais, France.



Children of **Eleanor, Duchess of Gloucester, de Bohun (#665)** and **Prince Thomas of Woodstock, Duke Gloucester, Earl Buckingham, Plantagenet (#436)**

- i. 44. **Anne of Woodstock, Countess of Buckingham, Plantagenet (#351)** was born in Apr. 1383 in Pheshy, Essex, England and died on Oct. 16, 1438 in Llanthony, Gloucestershire, England.

43. **Katherine Lancaster Plantagenet (#687)** was born on Jun. 6, 1372 in Hertford, Hertfordshire, England and died on Jun. 2, 1418 in Valladolid, Valladolid, Castilla-Leon, Spain. She married **Henry III Of Castile (#198)**. **Henry III Of**, son of **John I King of Castile Trastamara (#247)** and **Eleanor of Sicily (#329)**, was born on Oct. 4, 1379 in Burgos, Burgos, Castilla-Leon, Spain and died on Dec. 25, 1406 in Toledo, Toledo, Castilla-La Mancha, Spain.



Children of **Katherine Lancaster Plantagenet (#687)** and **Henry III Of Castile (#198)**

- i. 45. **John II Castile - King of Castile (#130)** was born on Mar. 6, 1405 in Toro, Zamora, Castilla-Leon, Spain and died on Jul. 20, 1454 in Valladolid, Valladolid, Castilla-Leon, Spain.

44. **Anne of Woodstock, Countess of Buckingham, Plantagenet (#351)** was born in Apr. 1383 in Pheshy, Essex, England and died on Oct. 16, 1438 in Llanthony, Gloucestershire, England. She married **Sir William, 1st Count of Eu, Bouchier (#605)**. **Sir William, 1st Count of Eu**, was born in 1386 in Little Eaton, Essex, England and died on May 28, 1420 in Troyes, Aube, Champagne-Ardenne, France.



Children of **Anne of Woodstock, Countess of Buckingham, Plantagenet (#351)** and **Sir William, 1st Count of Eu, Bouchier (#605)**

- i. 46. **Sir John Bouchier (#360)** was born in 1415 in Little Eaton, Essex, England and died on May 16, 1474 in Chertsey, Surrey, England.

23rd Generation (Great(20)-grandchildren)

44. **Anne of Woodstock, Countess of Buckingham, Plantagenet (#351)** was born in Apr. 1383 in Pheshy, Essex, England and died on Oct. 16, 1438 in Llanthony, Gloucestershire, England.
See previous entry for **Anne of Woodstock, Countess of Buckingham, Plantagenet (#351)** was born in Apr. 1383 in Pheshy, Essex, England and died on Oct. 16, 1438 in Llanthony, Gloucestershire, England.

45. **John II Castile - King of Castile (#130)** was born on Mar. 6, 1405 in Toro, Zamora, Castilla-Leon, Spain and died on Jul. 20, 1454 in Valladolid, Valladolid, Castilla-Leon, Spain. He married **Isabella Of Portugal - Queen consort of Castile and Leon (#378)**. **Isabella Of** was born in 1428 in Lisboa, Lisboa, Portugal and died on Aug. 15, 1496 in Arbevalo, bavila, Spain.



Children of **John II Castile - King of Castile (#130)** and **Isabella Of Portugal - Queen consort of Castile and Leon (#378)**

- i. 47. **Isabella I Castile - Queen of Castile and León (#627)** was born on Apr. 22, 1451 in Madrigal, Guadalajara, Castilla-La Mancha, Spain and died on Nov. 26, 1504 in Medina del Campo, Valladolid, Castilla-Leon, Spain.

46. **Sir John Bouchier (#360)** was born in 1415 in Little Eaton, Essex, England and died on May 16, 1474 in Chertsey, Surrey, England. He married **Lady Margery Berners (#114)**. **Lady Margery** was born in 1418 in West Horsley, Surrey, England and died on Dec. 18, 1475 in Little Eaton, Essex, England.



Children of **Sir John Bouchier (#360)** and **Lady Margery Berners (#114)**

- i. 48. **Sir Humphrey Bouchier (#139)** was born in 1444 in Ashwellthorpe, Norfolk, England and died on Apr. 14, 1471 in Battle of Barnet.

24th Generation (Great(21)-grandchildren)

47. **Isabella I Castile - Queen of Castile and León (#627)** was born on Apr. 22, 1451 in Madrigal, Guadalajara, Castilla-La Mancha, Spain and died on Nov. 26, 1504 in Medina del Campo, Valladolid, Castilla-Leon, Spain. She married **Ferdinand II Aragon - King of Spain (#400)**. **Ferdinand II**, son of **John II the Great King of Aragon (#652)** and **Juana Enriquez (#506)**, was born on Mar. 10, 1451 in Sos, Lot-et-Garonne, Aquitaine, France and died on Jan. 25, 1515 in Madrigalejo, Caceres, Extremadura, Spain.



Children of **Isabella I Castile - Queen of Castile and León (#627)** and **Ferdinand II Aragon - King of Spain (#400)**

- i. 49. **Catherine of Aragon (#113)** was born on Dec. 16, 1485 in Alcalá de Henares, Madrid, Madrid, Spain and died on Jan. 7, 1536 in Kimbolton Castle, Cambridgeshire, England.

48. **Sir Humphrey Bouchier (#139)** was born in 1444 in Ashwellthorpe, Norfolk, England and died on Apr. 14, 1471 in Battle of Barnet. He married **Lady Elizabeth Tilney (#501)**. **Lady Elizabeth**, daughter of **Frederick Tilney (#305)** and **Elizabeth Cheney (#648)**, was born in 1450 in Ashwellthrope, Norfolkshire, England and died on Apr. 4, 1497 in Baynards Castle, London, England.



Children of **Sir Humphrey Bouchier (#139)** and **Lady Elizabeth Tilney (#501)**

- i. 50. **John Bouchier (#604)** was born in 1467 in Halstead, Essex, England and died on Mar. 16, 1521.
- ii. 51. **Lady Margaret Bouchier Baroness Bryant (#293)** was born in 1468 in Benningborough, Yorkshire, England and died in 1552 in Cheddington, Buckinghamshire, England.

25th Generation (Great(22)-grandchildren)

49. **Catherine of Aragon (#113)** was born on Dec. 16, 1485 in Alcalá de Henares, Madrid, Madrid, Spain and died on Jan. 7, 1536 in Kimbolton Castle, Cambridgeshire, England. She married **Henry Tudor Henry VIII King of England (#202)** on Jun. 11, 1509 in Greenwich, London, England. **Henry**, son of **Henry Tudor VII ENGLAND (#345)** and **Elizabeth Plantagenet (#566)**, was born on Jun. 28, 1491 in Greenwich, Kent and died on Jan. 28, 1547 in Westminster, Worcester.



50. **John Bouchier (#604)** was born in 1467 in Halstead, Essex, England and died on Mar. 16, 1521.



51. **Lady Margaret Bouchier Baroness Bryant (#293)** was born in 1468 in Benningborough, Yorkshire, England and died in 1552 in Cheddington, Buckinghamshire, England. She married **Sir Thomas Bryan (#489)**. **Sir Thomas**, son of **Sir Thomas Bryan (#653)** and **Lady Margaret Bowsey (#634)**, was born in 1464 in Cheddington, Buckinghamshire, England and died on Jan. 30, 1517 in Cheddington, Buckinghamshire, England.



Children of **Lady Margaret Bouchier Baroness Bryant (#293)** and **Sir Thomas Bryan (#489)**

- i. 52. **Sir Francis Bryan (#64)** was born in 1490 in Cheddington, Buckinghamshire, England and died on Feb. 2, 1550 in Clonmel, Ire, Ireland.

26th Generation (Great(23)-grandchildren)

52. **Sir Francis Bryan (#64)** was born in 1490 in Cheddington, Buckinghamshire, England and died on Feb. 2, 1550 in Clonmel, Ire, Ireland. He married 1st **Lady Phillipa Montgomery (#432)** in Mar. 1522. **Lady Phillipa** was born on Jun. 1, 1492 in England and died on Jun. 1, 1540 in England. He married 2nd **Jean Joan Lady Fitzgerald (#140)**. **Jean**, daughter of **James Fitzmaurice Fitzgerald (#313)** and **Amy O Brien (#555)**, was born in 1521 in Chidington, Buckinghamshire, England and died on Jan. 2, 1565 in CY, Limerick, Ireland.



Children of **Sir Francis Bryan (#64)** and **Jean Joan Lady Fitzgerald (#140)**

- i. 53. **Sir Francis II Bryan (#316)** was born in 1549 in Claire, Ireland and died on Jun. 1, 1640 in Gloucester, Hampshire, Virginia, United States.

27th Generation (Great(24)-grandchildren)

53. **Sir Francis II Bryan (#316)** was born in 1549 in Claire, Ireland and died on Jun. 1, 1640 in Gloucester, Hampshire, Virginia, United States. He married **Ann Smith (#663)**. **Ann** was born in 1560 in Claire, Ireland and died on Jun. 1, 1635 in Clare, Ireland.



Children of **Sir Francis II Bryan (#316)** and **Ann Smith (#663)**

- i. 54. **William Smith Bryan (#376)** was born in 1600 in Claire, Ireland and died in 1667 in Gloucester, Gloucester, Virginia, United States.

28th Generation (Great(25)-grandchildren)

54. **William Smith Bryan (#376)** was born in 1600 in Claire, Ireland and died in 1667 in Gloucester, Gloucester, Virginia, United States. He married **Catherine "Countess of Ormond" Morgan (#684)**. **Catherine "Countess of Ormond"**, daughter of **Sir Thomas Morgan (#629)** and **Lady Catherine Herbert (#473)**, was born in 1600 in Claire, Ireland and died on Jun. 1, 1670 in Gloucester, Virginia, USA.



Children of **William Smith Bryan (#376)** and **Catherine "Countess of Ormond" Morgan (#684)**

- i. 55. **Sir Francis III Kgt Bryan (#578)** was born on Jun. 1, 1631 in County, Clare, Ireland and died on Apr. 1, 1693 in Belfast, Antrim, Ireland.

29th Generation (Great(26)-grandchildren)

55. **Sir Francis III Kgt Bryan (#578)** was born on Jun. 1, 1631 in County, Clare, Ireland and died on Apr. 1, 1693 in Belfast, Antrim, Ireland. He married **Sarah Brinker (#83)**. **Sarah** was born in Jun. 1634 in Denmark and died on Jun. 1, 1698 in Belfast, County Down, Ireland, Ireland.



Children of **Sir Francis III Kgt Bryan (#578)** and **Sarah Brinker (#83)**

- i. 56. **Sir Morgan Bryan (#67)** was born in 1671 in Denmark and died on Apr. 3, 1763 in Yadkin River, Rowan, North Carolina, United States.

30th Generation (Great(27)-grandchildren)

56. **Sir Morgan Bryan (#67)** was born in 1671 in Denmark and died on Apr. 3, 1763 in Yadkin River, Rowan, North Carolina, United States. He married **Martha Strode (#468)**. **Martha**, daughter of **Edward Strode (#85)** and **Susannah Hatchett (#183)**, was born in 1678 in Winchester, Frederick, Virginia, United States and died on Aug. 24, 1762 in Winchester, Frederick, Virginia, United States.



Children of **Sir Morgan Bryan (#67)** and **Martha Strode (#468)**

- i. 57. **William Bryan (#132)** was born on Mar. 7, 1733 in Snowfield, Bertie, North Carolina, United States and died on May 7, 1780 in Bryans Station, Fayette, Kentucky, United States.

31st Generation (Great(28)-grandchildren)

57. **William Bryan (#132)** was born on Mar. 7, 1733 in Snowfield, Bertie, North Carolina, United States and died on May 7, 1780 in Bryans Station, Fayette, Kentucky, United States.



Children of **William Bryan (#132)**

- i. 58. **Mary Bryan (#155)** was born on May 20, 1769 in Orange County, North Carolina and died on Jan. 28, 1857 in Hager Hill, Johnson County, Kentucky.

32nd Generation (Great(29)-grandchildren)

58. **Mary Bryan (#155)** was born on May 20, 1769 in Orange County, North Carolina and died on Jan. 28, 1857 in Hager Hill, Johnson County, Kentucky. She married **Col. John B. Van Hoose (#315)** in 1788 in Montgomery County, North Carolina. **Col. John B.**, son of **John Van Hooser (#471)** and **Hannah Cheek (#658)**, was born on Apr. 5, 1760 in Anson County, (Now Montgomery) North Carolina and died on Jan. 5, 1860 in Whitehouse, Johnson County, Kentucky.



Children of **Mary Bryan (#155)** and **Col. John B. Van Hoose (#315)**

- i. 59. **James S. Sr. Van Hoose (#521)** was born on Mar. 1, 1791 in Montgomery County, North Carolina and died on Nov. 24, 1864 in Johnson County, Kentucky.
- ii. 60. **John Henry Van Hoose (#536)** was born on Dec. 12, 1792 in Floyd, Montgomery County, North Carolina and died on Jul. 12, 1882 in Fayetteville, Washington County, Arkansas.
- iii. 61. **Levi Van Hoose (#585)** was born on Mar. 22, 1795 in Montgomery County, North Carolina and died in 1857 in Lori Pelphrey Flats, Johnson County, Kentucky.
- iv. 62. **Valentine Van Hoose (#487)** was born on Sep. 19, 1797 in Washington County, Virginia and died on Dec. 12, 1878 in Whitehouse, Johnson County, Kentucky.
- v. 63. **Hannah Van Hoose (#112)** was born on Feb. 28, 1800 in Washington County, Virginia and died on an unknown date.
- vi. 64. **Elizabeth Van Hoose (#186)** was born on Aug. 18, 1801 in Cabell county, Virginia and died in 1884 in Lawrence County, Kentucky.
- vii. 65. **Jesse Van Hoose (#353)** was born on May 17, 1804 in Cabell County, Virginia and died on Dec. 12, 1878.
- viii. 66. **Reuben Van Hoose (#283)** was born on Apr. 5, 1807 in Floyd County, Kentucky and died After 1870 in Lawrence County, Kentucky.
- ix. 67. **Sarah Van Hoose (#241)** was born on Oct. 31, 1809 in Cabell County, Virginia and died on Jul. 16, 1890 in Lawrence County, Kentucky.
- x. 68. **Thomas Van Hoose (#505)** was born on Jun. 7, 1812 in Johnson County, Kentucky and died on Oct. 31, 1875 in Sitka, Johnson County, Kentucky.

33rd Generation (Great(30)-grandchildren)

59. **James S. Sr. Van Hoose (#521)** was born on Mar. 1, 1791 in Montgomery County, North Carolina and died on Nov. 24, 1864 in Johnson County, Kentucky.



60. **John Henry Van Hoose (#536)** was born on Dec. 12, 1792 in Floyd, Montgomery County, North Carolina and died on Jul. 12, 1882 in Fayetteville, Washington County, Arkansas.



61. **Levi Van Hoose (#585)** was born on Mar. 22, 1795 in Montgomery County, North Carolina and died in 1857 in Lori Pelphrey Flats, Johnson County, Kentucky.



62. **Valentine Van Hoose (#487)** was born on Sep. 19, 1797 in Washington County, Virginia and died on Dec. 12, 1878 in Whitehouse, Johnson County, Kentucky.



63. **Hannah Van Hoose (#112)** was born on Feb. 28, 1800 in Washington County, Virginia and died on an unknown date.



64. **Elizabeth Van Hoose (#186)** was born on Aug. 18, 1801 in Cabell county, Virginia and died in 1884 in Lawrence County, Kentucky.



65. **Jesse Van Hoose (#353)** was born on May 17, 1804 in Cabell County, Virginia and died on Dec. 12, 1878.



66. **Reuben Van Hoose (#283)** was born on Apr. 5, 1807 in Floyd County, Kentucky and died After 1870 in Lawrence County, Kentucky. He married **Leodocia Pack (#256)** on Jun. 4, 1827 in Lawrence County, Kentucky. **Leodocia**, daughter of **Charles I Pack (#625)** and **Elizabeth Crum (#233)**, was born in 1809 in Floyd County, Kentucky and died on an unknown date.



Descendants of: Charlemagne the Great Emperor The West

Children of **Reuben Van Hoose (#283)** and **Leodocia Pack (#256)**

- i. 69. **John Van Hoose (#144)** was born in 1828 in Lawrence County, Kentucky and died in 1867.
- ii. 70. **William Van Hoose (#300)** was born in Sep. 1830 in Lawrence County, Kentucky and died After 1909.
- iii. 71. **Elizabeth Van Hoose (#673)** was born in 1833 in Norris, Lawrence County, Kentucky and died After 1917.
- iv. 72. **Valentine Van Hoose (#65)** was born in 1838 in Lawrence County, Kentucky and died in 1902 in Kentucky.
- v. 73. **Julia Ann Van Hoose (#409)** was born in 1840 in Georges Creek, Lawrence County, Kentucky and died in 1877 in Lawrence Co., Kentucky.
- vi. 74. **Thomas Van Hoose (#62)** was born in 1845 in Lawrence County, Kentucky and died Before 1890 in Charley, Lawrence County, Kentucky.
- vii. 75. **Martin Van Hoose (#147)** was born in 1847 in Lawrence County, Kentucky and died in 1865.
- viii. 76. **Louisa Van Hoose (#343)** was born in Feb. 1849 in Lawrence County, Kentucky and died in 1879.

67. **Sarah Van Hoose (#241)** was born on Oct. 31, 1809 in Cabell County, Virginia and died on Jul. 16, 1890 in Lawrence County, Kentucky.



68. **Thomas Van Hoose (#505)** was born on Jun. 7, 1812 in Johnson County, Kentucky and died on Oct. 31, 1875 in Sitka, Johnson County, Kentucky.



34th Generation (Great(31)-grandchildren)

69. **John Van Hoose (#144)** was born in 1828 in Lawrence County, Kentucky and died in 1867. He married **Sarah Ann Miller (#563)** on Aug. 31, 1848 in Johnson County, Kentucky. **Sarah Ann** was born in 1829 in Lawrence County, Kentucky and died on an unknown date.



Children of **John Van Hoose (#144)** and **Sarah Ann Miller (#563)**

- i. 77. **Louisa Van Hoose (#131)** was born in Feb. 1850 in Lawrence County, Kentucky and died on an unknown date.
- ii. 78. **Mary Ann Van Hoose (#42)** was born in 1852 and died on an unknown date.
- iii. 79. **William Van Hoose (#491)** was born on Jan. 18, 1854 and died on Oct. 11, 1925.
- iv. 80. **Reuben Van Hoose (#543)** was born in 1856 and died on an unknown date.
- v. 81. **George W. Van Hoose (#110)** was born on Aug. 2, 1859 in Lawrence County, Kentucky and died on Aug. 2, 1859 in Lawrence County, Kentucky.
- vi. 82. **Laban Van Hoose (#419)** was born on Jul. 23, 1860 and died in Aug. 1860.
- vii. 83. **Wallace Van Hoose (#447)** was born on Mar. 1, 1862 in Johnson County, Kentucky and died on Mar. 1, 1938.
- viii. 84. **Ledocia Van Hoose (#258)** was born in 1866 and died on an unknown date.
- ix. 85. **Martin Van Hoose (#433)** was born on Apr. 14, 1867 in Louisa, Lawrence County, Kentucky and died on an unknown date.

70. **William Van Hoose (#300)** was born in Sep. 1830 in Lawrence County, Kentucky and died After 1909.



Descendants of: Charlemagne the Great Emperor The West

71. **Elizabeth Van Hoose (#673)** was born in 1833 in Norris, Lawrence County, Kentucky and died After 1917.



72. **Valentine Van Hoose (#65)** was born in 1838 in Lawrence County, Kentucky and died in 1902 in Kentucky.



73. **Julia Ann Van Hoose (#409)** was born in 1840 in Georges Creek, Lawrence County, Kentucky and died in 1877 in Lawrence Co., Kentucky.



74. **Thomas Van Hoose (#62)** was born in 1845 in Lawrence County, Kentucky and died Before 1890 in Charley, Lawrence County, Kentucky.



75. **Martin Van Hoose (#147)** was born in 1847 in Lawrence County, Kentucky and died in 1865.



76. **Louisa Van Hoose (#343)** was born in Feb. 1849 in Lawrence County, Kentucky and died in 1879.



35th Generation (Great(32)-grandchildren)

77. **Louisa Van Hoose (#131)** was born in Feb. 1850 in Lawrence County, Kentucky and died on an unknown date.



78. **Mary Ann Van Hoose (#42)** was born in 1852 and died on an unknown date.



Descendants of: Charlemagne the Great Emperor The West

79. **William Van Hoose (#491)** was born on Jan. 18, 1854 and died on Oct. 11, 1925.



80. **Reuben Van Hoose (#543)** was born in 1856 and died on an unknown date.



81. **George W. Van Hoose (#110)** was born on Aug. 2, 1859 in Lawrence County, Kentucky and died on Aug. 2, 1859 in Lawrence County, Kentucky.



82. **Laban Van Hoose (#419)** was born on Jul. 23, 1860 and died in Aug. 1860.



83. **Wallace Van Hoose (#447)** was born on Mar. 1, 1862 in Johnson County, Kentucky and died on Mar. 1, 1938. He married **Letitia Castle (#29)** on Mar. 17, 1884. **Letitia** was born on Apr. 16, 1868 in Lawrence Co., Ky and died on Apr. 9, 1957 in Springfield, Clark Co., Ohio.



Children of **Wallace Van Hoose (#447)** and **Letitia Castle (#29)**

- i. 86. **Stella Van Hoose (#656)** was born on Aug. 3, 1885 in Little Blaine, Lawrence County, Kentucky and died on Jan. 14, 1923.
- ii. 87. **Telia Van Hoose (#638)** was born on Mar. 25, 1889 in Johnson County, Kentucky and died on an unknown date.
- iii. 88. **Sarah Frances Van Hoose (#554)** was born on Mar. 18, 1891 and died on an unknown date.
- iv. 89. **Living Van Hoose (#15)**.
- v. 90. **Ephriam Van Hoose (#552)** was born on Mar. 5, 1906 in Charley, Lawrence Co., Ky. and died Before Jul. 13, 2000 in Reynoldsburg, Franklin Co., Ohio.

84. **Ledocia Van Hoose (#258)** was born in 1866 and died on an unknown date.



85. **Martin Van Hoose (#433)** was born on Apr. 14, 1867 in Louisa, Lawrence County, Kentucky and died on an unknown date.



36th Generation (Great(33)-grandchildren)

86. **Stella Van Hoose (#656)** was born on Aug. 3, 1885 in Little Blaine, Lawrence County, Kentucky and died on Jan. 14, 1923.



87. **Telia Van Hoose (#638)** was born on Mar. 25, 1889 in Johnson County, Kentucky and died on an unknown date.



88. **Sarah Frances Van Hoose (#554)** was born on Mar. 18, 1891 and died on an unknown date.



89. **Living Van Hoose (#15)**.



90. **Ephriam Van Hoose (#552)** was born on Mar. 5, 1906 in Charley, Lawrence Co., Ky. and died Before Jul. 13, 2000 in Reynoldsburg, Franklin Co., Ohio. He married **Florence F. Wagner (#661)**. **Florence F.** was born About 1910 in Grandview Heights, Ohio and died on Jul. 13, 2000 in Wexner Heritage House, Columbus, Ohio.



Children of **Ephriam Van Hoose (#552)** and **Florence F. Wagner (#661)**

- i. 91. **Connie Van Hoose (#462)** was born on Nov. 28, 1947 in Columbus Ohio.
- ii. 92. **Living Van Hoose (#341)**.
- iii. 93. **Bob Van Hoose (#115)**.

37th Generation (Great(34)-grandchildren)

91. **Connie Van Hoose (#462)** was born on Nov. 28, 1947 in Columbus Ohio. She married 1st (Unknown). She married 2nd **Connie Van Hoose (#462)**. **Connie**, daughter of **Ephriam Van Hoose (#552)** and **Florence F. Wagner (#661)**, was born on Nov. 28, 1947 in Columbus Ohio.



Children of **Connie Van Hoose (#462)**

- i. 94. **Rick Stevens (#667)**.
- ii. 95. **Mike Stevens (#33)**.

Children of **Connie Van Hoose (#462)** and **Connie Van Hoose (#462)**

- iii. 96. **Christopher Bruce Burns (#1)** was born on Dec. 26, 1964 in Columbus, Ohio, USA.

92. **Living Van Hoose (#341).**



93. **Bob Van Hoose (#115).**



38th Generation (Great(35)-grandchildren)

94. **Rick Stevens (#667).**



95. **Mike Stevens (#33).**



96. **Christopher Bruce Burns (#1)** was born on Dec. 26, 1964 in Columbus, Ohio, USA. He married **Ann Stewart (#438)**. **Ann**, daughter of **Goodwill Murray Stewart (#58)** and **Valerie Mae Corson (#575)**, was born on Aug. 19, 1961 in Stoughton, Massachusetts, USA.



Notes

Notes on Charlemagne the Great Emperor The West (#657)

cCharlemane

<http://trees.ancestry.com/rd?f=image&guid=25c0c068-131b-434e-90b0-002bc9b3c03d&tid=18556851&pid=888424799>

charlemagne history

<http://trees.ancestry.com/rd?f=document&guid=d0a4b0e7-6f62-4ce4-824a-094f49a0fca7&tid=18556851&pid=888424799>

Notes on Poppa Puppet Little Doll Duchess of DeValois (#382)

Ancestry of Poppa, wife of Rolf the Ganger

<http://trees.ancestry.com/rd?f=document&guid=eefc4053-6228-4cdc-9cd9-4dc64ec7e363&tid=18556851&pid=858215575>

Notes on William I Conqueror (#84)

william_conqueror

<http://trees.ancestry.com/rd?f=image&guid=a7108f82-c1cc-4537-bce6-811a2700f70c&tid=18556851&pid=858163504>

Notes on King Henry I Beauclerc Of England (#296)

beauclerc

<http://trees.ancestry.com/rd?f=image&guid=da621ebe-474f-4a3b-aeb9-944f71592f02&tid=18556851&pid=854999642>

Descendants of: Charlemagne the Great Emperor The West

Notes on Matilda Maud Empress Of Germany Princess of ENGLAND (#404)

Matilda

<http://trees.ancestry.com/rd?f=document&guid=dd6dceb8-0f47-476f-a0ec-5586f7db3bce&tid=18556851&pid=854756555>

MATILDA

<http://trees.ancestry.com/rd?f=document&guid=4d65eb3b-9248-43ed-a314-8c8e5e54db62&tid=18556851&pid=854756555>

Matilda

<http://trees.ancestry.com/rd?f=image&guid=267bb56c-9b87-4177-b7f2-9945287c007c&tid=18556851&pid=854756555>

Notes on Henry II Plantagenet King of England (#174)

King Henry II

<http://trees.ancestry.com/rd?f=image&guid=6db6177b-193e-42da-89e2-ef1e81412720&tid=18556851&pid=854744071>

Notes on King John Lackland Plantagenet (#142)

John Lackland "King John" Plantagenet

<http://trees.ancestry.com/rd?f=image&guid=93094a17-f615-4c83-9a88-407213a80b02&tid=18556851&pid=854717715>

House of Plantagenet

<http://trees.ancestry.com/rd?f=document&guid=05f616ab-72f8-44e0-a379-f47003c7d668&tid=18556851&pid=854717715>

Notes on Henry III 'King of England' Plantagenet (#254)

HenryIII

<http://trees.ancestry.com/rd?f=image&guid=c2c4ddf5-0b1c-4078-a75e-25450ff75a92&tid=18556851&pid=851294977>

Henry III of Winchester

<http://trees.ancestry.com/rd?f=image&guid=30a1bbbe-4dee-4096-8ef7-94bddc86d56d&tid=18556851&pid=851294977>

Notes on EDWARD I England Longshanks PLANTAGENET (#650)

King Edward I Longshanks, King of England

<http://trees.ancestry.com/rd?f=image&guid=c5bba2f5-109a-4f98-9f53-9e525bbebb91&tid=18556851&pid=851182975>

House of Plantagenet

<http://trees.ancestry.com/rd?f=document&guid=05f616ab-72f8-44e0-a379-f47003c7d668&tid=18556851&pid=851182975>

Notes on ELIZABETH "OF RHUDDLAN" PLANTAGENET (#542)

Elizabeth Plantagenet Bohun

<http://trees.ancestry.com/rd?f=image&guid=a3eca7c0-792f-437d-88f1-f5566ad9c895&tid=18556851&pid=865195158>

Notes on Edward II King England Plantagenet (#214)

King of England Edward II

<http://trees.ancestry.com/rd?f=image&guid=23929e14-6c91-431d-af78-66487b4700ca&tid=18556851&pid=851172670>

House of Plantagenet

<http://trees.ancestry.com/rd?f=document&guid=05f616ab-72f8-44e0-a379-f47003c7d668&tid=18556851&pid=851172670>

Notes on Edward III King of England, Lord of Ireland Plantagenet (#117)

Edward III

<http://trees.ancestry.com/rd?f=image&guid=8cd663bf-8264-49ef-a474-59f8679d55f5&tid=18556851&pid=851163821>

House of Plantagenet

<http://trees.ancestry.com/rd?f=document&guid=05f616ab-72f8-44e0-a379-f47003c7d668&tid=18556851&pid=851163821>

Notes on Sir Humphrey, vh Earl of Essex, Hereford and Northampton, KG, De Bohun (#237)

Sir Humphrey De Bohun 1 1342-1373

<http://trees.ancestry.com/rd?f=image&guid=b2491794-a9d7-4506-bf1f-b0e6b0bf68ed&tid=18556851&pid=865139997>

Notes on Prince Thomas of Woodstock, Duke Gloucester, Earl Buckingham, Plantagenet (#436)

THOMAS PLANTAGENET

<http://trees.ancestry.com/rd?f=image&guid=e1ace52a-84a7-4039-825c-4ceb31d13d67&tid=18556851&pid=851148739>

Thomas of Woodstock Plantagenet

<http://trees.ancestry.com/rd?f=document&guid=c1da9a90-cbda-4c1b-b76b-53c853e82018&tid=18556851&pid=851148739>

Notes on Eleanor, Duchess of Gloucester, de Bohun (#665)

ELEANOR ODE BOHUN

<http://trees.ancestry.com/rd?f=image&guid=cc9ce1f4-5f60-49ac-b2af-34f05aac117d&tid=18556851&pid=851148742>

Notes on Anne of Woodstock, Countess of Buckingham, Plantagenet (#351)

House of Plantagenet

<http://trees.ancestry.com/rd?f=document&guid=05f616ab-72f8-44e0-a379-f47003c7d668&tid=18556851&pid=851131278>

Notes on Lady Margaret Bouchier Baroness Bryant (#293)

margaret bouchier

<http://trees.ancestry.com/rd?f=image&guid=2bac3e76-f132-4b29-bfe1-1915f90b7d67&tid=18556851&pid=850482940>

Lady Margaret

<http://trees.ancestry.com/rd?f=document&guid=241b741b-a222-4728-85fe-befcfb31514f&tid=18556851&pid=850482940>

Notes on Sir Francis Bryan (#64)

Sir Francis BRYAN of the Blackfriars, Ampthill, and Woburn

<http://trees.ancestry.com/rd?f=document&guid=ac21a214-1274-4a19-b445-65b7cfaebe99&tid=18556851&pid=847956773>

Francis Bryan "Vicar of hell"

<http://trees.ancestry.com/rd?f=document&guid=3c63873e-f82b-49f5-9f6c-c4677dd10ae5&tid=18556851&pid=847956773>

Notes on Sir Francis II Bryan (#316)

Sir Frances II BRYAN

<http://trees.ancestry.com/rd?f=document&guid=211df77b-24e2-4d96-8b7c-4a5fa59b4ec2&tid=18556851&pid=847950544>

Bryan Arms

<http://trees.ancestry.com/rd?f=image&guid=1e73dc8c-a68d-424d-b48b-5c4073468783&tid=18556851&pid=847950544>

Notes on William Smith Bryan (#376)

exile to America: Ordered by Olivier Cromwell

<http://trees.ancestry.com/rd?f=document&guid=73bae5c7-699b-4db0-9446-e0cf761f5f3c&tid=18556851&pid=840107935>

Notes on Sir Francis III Kgt Bryan (#578)

Background

<http://trees.ancestry.com/rd?f=document&guid=103d759e-0f8d-44d4-8e23-4c7bc5a1088b&tid=18556851&pid=840049959>

William III at the Battle of the Boyne

<http://trees.ancestry.com/rd?f=image&guid=22c166fe-471a-41bb-a2c5-f17cadd9e260&tid=18556851&pid=840049959>

Notes on Sir Morgan Bryan (#67)

Denmark

<http://trees.ancestry.com/rd?f=image&guid=da4a5e84-3acf-4d11-bddc-334296bc8488&tid=18556851&pid=840030763>

Notes on William Bryan (#132)

bryans station marker

<http://trees.ancestry.com/rd?f=image&guid=a8679591-1f39-4972-8dcd-0083c6696996&tid=18556851&pid=840025707>

William Bryan, RWS, 1733-1782

<http://trees.ancestry.com/rd?f=image&guid=b82f4cf1-b38b-4f6d-bab1-8a66f2a0ffa1&tid=18556851&pid=840025707>

Bryan Station Historic Site

<http://trees.ancestry.com/rd?f=image&guid=b67c8143-0d6c-4c5e-9b8f-8eb1f80026b7&tid=18556851&pid=840025707>

Notes on John Van Hoose (#144)

John Van Hoose

<http://trees.ancestry.com/rd?f=image&guid=ab81c8cf-284a-439c-ab0d-d2c045a69bca&tid=18556851&pid=677108876>

Notes on Christopher Bruce Burns (#1)

Agrarians Haplogroup T

<http://trees.ancestry.com/rd?f=document&guid=f14b0bfd-af05-452b-9e35-47c2356d4233&tid=18556851&pid=677108941>

VAN HOOSE VAN HOOSER VAN HUSS FAMILY IN AMERICA by Joyce Lindstrom; abridged, modified

<http://trees.ancestry.com/rd?f=document&guid=249f6e50-f3c8-4281-bda7-5906ce63b471&tid=18556851&pid=677108941>

Christopher Bruce Burns

<http://trees.ancestry.com/rd?f=document&guid=21490ba9-f24e-4fac-86f2-60d9a6a961d1&tid=18556851&pid=677108941>

Descendants of Charles Martel

<http://trees.ancestry.com/rd?f=document&guid=069ff252-1322-46ce-b437-738f88a9bc16&tid=18556851&pid=677108941>

Descendants of Charlemagne the Great Emperor The West

<http://trees.ancestry.com/rd?f=document&guid=0f734aab-fc11-4088-88a5-9b93f7e2fe98&tid=18556851&pid=677108941>

Ann Burns, Chris' Wife

<http://trees.ancestry.com/rd?f=image&guid=0150444d-2fdb-4d29-a3a7-a8d69ed44500&tid=18556851&pid=677108941>

Chris White House

<http://trees.ancestry.com/rd?f=image&guid=5cbb066e-29d2-41a0-8161-ac50fdc105fd&tid=18556851&pid=677108941>

**Descendants of:
Charlemagne the Great Emperor The West**